

DEPARTMENT OF THE ARMY TECHNICAL MANUAL

ORGANIZATIONAL, DIRECT SUPPORT, AND GENERAL
 SUPPORT MAINTENANCE REPAIR PARTS AND SPECIAL
 TOOLS LISTS (INCLUDING DEPOT MAINTENANCE
 REPAIR PARTS AND SPECIAL TOOLS)
 RACK, ELECTRICAL EQUIPMENT MT-2345/G
 NSN 5815-00-892-9088

Headquarters, Department of the Army, Washington, DC
 15 January 1975

Current as of December 1974

		Paragraph	Page
SECTION I	INTRODUCTION		2
	Scope	1-1	2
	General.....	1-2	2
	Explanation of Columns.....	1-3	3
	Special Information.....	1-4	9
	Location of Repair Parts.....	1-5	10
	Abbreviations (Not Applicable).....	1-6	10
	Reporting of Equipment Publications Improvement	1-7	10
II	BASIC ISSUE ITEMS, TROOP ITEMS (Not Applicable)		
III	TROOP INSTALLED ITEMS (Not Applicable)		
IV	REPAIR PARTS LIST		11
V	SPECIAL TOOLS LIST (Not Applicable)		
VI	NSN and PART NUMBER DATA		20

This publication is not available through AG Publications Center. Requisition through Commander, US Army Security Agency, Materiel Support Command, Vint Hill Farms, Warrenton, VA 22186.

BASIC ISSUE ITEMS LIST AND ITEMS TROOP INSTALLED OR AUTHORIZED
LIST AND ORGANIZATIONAL, DIRECT SUPPORT, AND GENERAL
SUPPORT MAINTENANCE REPAIR PARTS AND SPECIAL TOOLS LIST
RACK, ELECTRICAL EQUIPMENT, MT-2345/G

Section I. INTRODUCTION

1-1. Scope.

This manual lists basic issue items; items troop installed or authorized, repair parts; special tools; test measurement, and diagnostic equipment (TMDE); and other support equipment required for operation and performance of organizational, direct support, and general support maintenance of the MT-2345/G.

1-2. General.

This Basic Issue Items, Items Troop Installed or Authorized, Repair Parts and Special Tools List is divided into the following sections:

a. Section II. Basic Issue Items List. A list, in alphabetical sequence, of items which are furnished with and which must be turned in with the end item. Not applicable.

b. Section III. Items Troop Installed or Authorized List. A list, in alphabetical sequence, of items which, at the discretion of the unit commander, may accompany the end item, but should not be turned in with the end item. Not applicable.

c. Section IV. Repair Parts List. A list of repair parts authorized for use in the performance of maintenance. The list also includes parts which must be removed for replacement of the authorized parts. Parts lists are composed of functional groups in ascending numerical sequence, with the parts in each group listed in figure and item number sequence. Bulk materials are listed in NSN sequence.

d. Section V. Special Tools List. A list of special tools, TMDE, and support equipment authorized for the performance of maintenance at the organizational level. Not applicable.

e. Section VI. National Stock Number and Part Number Index. A list, in ascending numerical sequence, of all National Stock Numbers appearing in the listings, followed by a list, in alphameric sequence, of all part numbers referenced to each illustration figure and item number appearance. This index is followed by a cross-reference list of reference designations to figure and item numbers when applicable.

1-3. Explanation of Columns..

The following provides an explanation of columns found in the tabular listings:

a. Illustration. This column is divided as follows:

- (1) Figure Number. Indicates the figure number of the illustration in which the item is shown.
- (2) Item Number. The number used to identify each item called out in the illustration.

b. Source, Maintenance, and Recoverability Codes (SMR).

(1) Source Code. Source codes are assigned to support items to indicate the manner of acquiring support items for maintenance, repair, or overhaul of end items. Source codes are entered in the first and second positions of the Uniform SMR Code format as follows:

Code	-	Definition
PA	-	Item procured and stocked for anticipated or known usage.
PB	-	Item procured and stocked for insurance purpose because essentiality dictates that a minimum quantity be available in the supply systems.
PC	-	Item procured and stocked and which otherwise would be coded PA except that it is deteriorative in nature.

Code		Definition
PD	-	Support item, excluding support equipment, procured for initial issue or outfitting and stocked only for subsequent or additional initial issues or outfittings. Not subject to automatic replenishment.
PE	-	Support equipment procured and stocked for initial issue or outfitting to specified maintenance repair activities.
PF	-	Support equipment which will not be stocked but which will be centrally procured on demand.
PG	-	Item procured and stocked to provide for sustained support for the life of the equipment. It is applied to an item peculiar to the equipment which, because of probable discontinuance or shutdown of production facilities, would prove uneconomical to reproduce at a later time.
KD	-	An item of a depot overhaul/repair kit and not purchased separately. Depot kit defined as a kit that provides items required at the time of overhaul or repair.
KF	-	An item of a maintenance kit and not purchased separately. Maintenance kit defined as a kit that provides an item that can be replaced at organizational or intermediate levels of maintenance.
KB	-	Item included in both a depot overhaul/repair kit and a maintenance kit.
MO	-	Item to be manufactured or fabricated at organizational level.

Code		Definition
MF	-	Item to be manufactured or fabricated at the direct support maintenance level.
MH	-	Item to be manufactured or fabricated at the general support maintenance level.
MD	-	Item to be manufactured or fabricated at the depot maintenance level.
AO	-	Item to be assembled at organizational level.
AF	-	Item to be assembled at direct support maintenance level.
AH	-	Item to be assembled at general support maintenance level.
AD	-	Item to be assembled at depot maintenance level.
XA	-	Item is not procured or stocked because the requirements for the item will result in the replacement of the next higher assembly.
XB	-	Item is not procured or stocked. If not available through salvage, requisition.
XD	-	A support item that is not stocked. When required, item will be procured through normal supply channels.

NOTE: Cannibalization or salvage may be used as a source of supply for any items source coded above except those coded XA, XD, and aircraft support items as restricted by AR 700-42.

(2) Maintenance Code. Maintenance codes are assigned to indicate the levels of maintenance authorized to USE and REPAIR support items. The maintenance codes are entered in the third and fourth positions of the Uniform SMR Code format as follows:

(a) The maintenance code entered in the third position will indicate the lowest maintenance level authorized to remove, replace, and use the support item. The maintenance code entered in the third position will indicate one of the following levels of maintenance:

Code		Application/Explanation
C	-	Crew or operator maintenance performed within organizational maintenance.
O	-	Support item is removed, replaced, used at the organizational level.
I	-	Support item is removed; replaced, used by the direct support element of integrated direct support maintenance.
F	-	Support item is removed, replaced, used at the direct support level.
H	-	Support item is removed, replaced, used at the general support level.
D	-	Support items that are removed, replaced, used at depot, mobile depot, specialized repair activity only.

NOTE: Codes "I" and "F" will be considered the same by direct support units.

(b) The maintenance code entered in the fourth position indicates whether the item is to be repaired and identifies the lowest maintenance level with the capability to perform complete repair (i.e., all authorized maintenance functions). This position will contain one of the following maintenance codes:

Code		Application/Explanation
O	-	The lowest maintenance level capable of complete repair of the support item is the organizational level.
F	-	The lowest maintenance level capable of complete repair of the support item is the direct support level.

Code		Application/Explanation
H	-	The lowest maintenance level capable of complete repair of the support item is the general support level.
D	-	The lowest maintenance level capable of complete repair of the support item is the depot level, performed by the Materiel Support Command Depot Activity.
L	-	Repair restricted to designated specialized repair activity.
Z	-	Nonreparable. No repair is authorized.
B	-	No repair is authorized. The item may be reconditioned by adjusting, lubricating, etc., at the user level. No parts or special tools are procured for the maintenance of this item.

(3) Recoverability Code. Recoverability codes are assigned to support items to indicate the disposition action on unserviceable items. The recoverability code is entered in the fifth position of the Uniform SMR Code format as follows:

Recoverability Codes		Definition
Z	-	Nonreparable item. When unserviceable, condemn and dispose at the level indicated in position 3.
0	-	Reparable item. When uneconomically repairable, condemn and dispose at organizational level.
F	-	Reparable item. When uneconomically repairable, condemn and dispose at the direct support level.
H	-	Reparable item. When uneconomically repairable, condemn and dispose at the general support level.

Recoverability Codes	Definition
D -	Reparable item. When beyond lower level repair capability, return to depot. Condemnation and disposal not authorized below depot level.
L -	Reparable item. Repair, condemnation, and disposal not authorized below depot/ specialized repair activity level.
A -	Item requires special handling or condemnation procedures because of specific reasons (i.e., precious metal content, high dollar value, critical material or hazardous material). Refer to appropriate manuals/directives for specific instructions.

c. National Stock Number. Indicates the National Stock Number assigned to the item and will be used for requisitioning purposes.

d. Part Number. Indicates the primary number used by the manufacturer and the government, which controls the design and characteristics of the item by means of its engineering drawings, specifications standards, and inspection requirements, to identify an item or range of items. For BIIL and ITIAL, see explanation of description column, para f.

NOTE: When a stock numbered item is requisitioned, the repair part received may have a different part number than the part being replaced.

e. Federal Supply Code for Manufacturer (FSCM). The FSCM is a 5digit numeric code listed in SB 708-42 which is used to identify the manufacturer, distributor, or Government agency, etc. For BIIL and ITIAL, see explanation of description column, para f.

f. Description. Indicates the National item name and if required, a minimum description to identify the item. (In BIIL and ITIAL only, the following will be used: "The last line for each item in the BIIL and ITIAL indicates the part number with the FSCM in parentheses").

Items that are included in kits and sets are listed below the name of the kit or set with the quantity of each item in the kit or set indicated in the quantity incorporated in unit column. When the part to be used differs between serial numbers of the same model, the effective serial numbers are shown as the last line of the description. In the Special Tools List, the initial Basis of Issue (BOI) appears as the last line in the entry for each special tool, TMDE, and support equipment. When density of equipments supported exceeds density spread indicated in the basis of issue, the total authorization is increased accordingly.

g. Unit of Measure (U/M). Indicates the standard of the basic quantity of the listed item as used in performing the actual maintenance function. This measure is expressed by a two-character alphabetical abbreviation (e.g., ea, in, pr, etc.). When the unit of measure differs from the unit of issue, the lowest unit of issue that will satisfy the required units of measure will be requisitioned.

h. Quantity Furnished with Equipment (Basic Issue Items Only). Indicates the quantity of the basic issue item furnished with the equipment.

i. Quantity Authorized (Items Troop Installed or Authorized Only). Indicates the quantity of the item authorized to be used with the equipment.

j. Quantity Incorporated in Unit. Indicates the quantity of the item used in the breakout shown on the illustration figure, which is prepared for a functional group, subfunctional group, or an assembly. A "V" appearing in this column in lieu of a quantity indicates that no specific quantity is applicable (e.g., shims, spacers, etc.).

1-4. Special Information.

a. Usable on codes are shown in the description column. Uncoded items are applicable to all models.

b. Detailed manufacturing instructions for items source coded to be manufactured or fabricated are found in the depot drawing package. Bulk materials required to manufacture items are listed in the Bulk Material Group of this manual.

c. Detailed assembly instructions for items source coded to be assembled are found in this manual if applicable. Assembly components are listed immediately following the item to be assembled.

d. Repair parts kits and gasket sets are listed at the end of the repair parts listing for the last figure containing parts of the kit.

e. (Applicable to revisions or changes only). Action change codes indicated in the left-hand margin of the listing page denote the following:

- N - Indicates an added item
- C - Indicates a change in data
- R - Indicates a change in FSN only

1-5. How to Locate Repair Parts.

a. When National Stock Number or Part Number is Unknown

(1) First. Using the table of contents, determine the subgroup within which the repair part belongs. This is necessary since illustrations are prepared for Audio Switch Box, Power Distribution, and Drawers and listings are divided into the same groups.

(2) Second. Find the illustration covering the subgroup to which the repair part belongs.

(3) Third. Identify the repair part on the illustration and note the illustration figure and item number of the repair part.

(4) Fourth. Using the Repair Parts Listing, find the figure and item number on the illustration.

b. When National Stock Number or Part Number is Known:

(1) First. Using the Index of National Stock Numbers and Part Numbers, find the pertinent Federal stock number or part number. This index is in ascending NSN sequence followed by a list of part numbers in ascending alphameric sequence, cross-referenced to the illustration figure number and item number.

(2) Second. After finding the figure and item number, locate the figure and item number in the repair parts list.

1-6. Abbreviations. Not applicable.

1-7. Recommendation for Maintenance Publications Improvements.

You can improve this manual by recommending improvements using DA Form 2028 (Recommended Changes to Publications and Blank Forms) and mail the form direct to Commander, US Army Security Agency, Materiel Support Command, ATTN: IAMNMP, Vint Hill Farms, Warrenton, VA 22186. A reply will be furnished direct to you.

SECTION IV REPAIR PARTS LIST

(1) ILLUSTRATION		(2)	(3)	(4)	(5)	(6) DESCRIPTION	(7)	(8) QTY INC IN UNIT
(a) FIG NO.	(b) ITEM NO.	SMR CODE	NATIONAL STOCK NUMBER	PART NUMBER	FSCM	USABLE ON CODE	U/M	
1		XBOFD	5815-00-892-9088	MT-2345G	80058	RACK, ELECTRICAL EQU		
1	01	XBOFD	5895-00-482-6499	2619-1-317	15942	SWITCH BOX ASSEMBLY	EA	0001
1	02	XBOFD		2619-1-315	15942	BOX, POWER DISTRIBTN ASSY	EA	0001
1	03	XBOFD		2619-1-314	15942	SHELF, TYPEWRITER ASSY	EA	0001
1	04	XBOFD		2619-1-311	15942	DRAWER, RECORDER ASSY	EA	0001
1	05	XBODD		2619-1-306	15942	SLIDE ASSEMBLY	EA	0001
1	06	XBOFF		2619-1-320	15942	AUDIO CABLE ASSY	EA	0001
1	07	XBFZZ		2619-1-226-1	15942	PAPER ROLL BRACKET ASSY	EA	0001
1	08	XBFZZ		2619-1-223	15942	PAPER ROLL ASSY	EA	0001
1	09	XBFZZ		2619-1-222	15942	CLAMP, BRACKET	EA	0001
1	10	XBFZZ		2619-1-221	15942	CLAMP, BAR CABLE	EA	0001
1	11	XBFZZ		2619-1-212	15942	ANGLE, LOCKING	EA	0001
1	12	XBFZZ		2619-1-213	15942	TYPEWRITER MOUNTING PLATE	EA	0001
1	13	XBFZZ		2619-1-214	15942	NAMEPLATE	EA	0001
1	14	XBFZZ		2619-1-149	15942	ADAPTER, WALL MOUNT	EA	0001
1	15	XBFZZ		2619-1-226	15942	PAPER ROLL BRACKET ASSY	EA	0001
1	16	PAFZZ	5935-00-868-0467	NO 32B	82389	JACK, PHONE	EA	0001
1	17	PAFZZ	5310-00-319-2614	NO 203	90201	WASHER	EA	0001
1	18	PAFZZ	5305-00-059-4568	MS35190-253	96906	SCREW, MACHINE	EA	0002
1	19	PAFZZ	5305-00-957-6273	MS35190-270	96906	SCREW, MACHINE	EA	0012
1	20	PAFZZ	5305-00-088-8332	MS35190-272	96986	SCREW, MACHINE	EA	0008
1	21	PAFZZ	5305-00-958-5245	PA1784	79805	SCREW, MACHINE	EA	0003
1	22	PAFZZ	5305-00-984-4988	MS352806-25	96906	SCREW, MACHINE	EA	0002
1	23	PAFZZ	5305-00-989-7435	NBOP16018C17	24446	SCREW, MACHINE	EA	0018

REPAIR PARTS LIST

(1) ILLUSTRATION		(2) SMR CODE	(3) NATIONAL STOCK NUMBER	(4) PART NUMBER	(5) FSCM	(6) DESCRIPTION	USABLE ON CODE	(7) U/M	(8) QTY INC IN UNIT
(a) FIG NO.	(b) ITEM NO.								
1	24	PAFZZ	5305-00-993-1848	MS35287-265	96906	SCREW, MACHINE		EA	0012
1	25	PAFZZ	5305-00-958-0662	MS35287-231	96986	SCREW		EA	0004
1	26	PAFZZ	5305-00-988-1725	N80P21012Q90	89817	SCREW, MACHINE		EA	0002
1	27	PAFZZ	5305-00-068-8501	9415796	24617	SCREW, CAP, HEXAGON H		EA	0001
1	28	PAFZZ		2619-1-401	15942	BOLT, HEX HEAD		EA	0001
1	29	PAFZZ	5310-00-877-5797	22M02	72962	NUT, HEX		EA	0032
1	38	PAFZZ	5310-00-761-6882	MS51967-2	96906	NUT, HEX		EA	0010
1	31	PAFZZ	5318-00-607-3691	836-1445REVAPC4	23168	NUT, SELF-LOCKING, HE		EA	0002
1	32	PAFZZ	5305-00-253-5689	17-675-88-882	78822	SCREW, DRIVE		EA	0006
1	33	XBFZZ	5340-00-060-4824	725	71002	CLAMP, LOOP		EA	0006
1	34	PAFZZ	5305-00-822-1657	MS90725	81348	BOLT HEX HD		EA	0006
1	35	PAFZZ	5310-00-436-7218	MS51969-11	96906	NUT PLAIN HEX BRASS		EA	0006
1	36	PAFZZ	5310-00-809-4058	A22506-4	89326	WASHER, FLAT		EA	0006
1	37	PAFZZ	5310-00-582-5965	AN935-416	88044	HASHER, LOCK		EA	0006

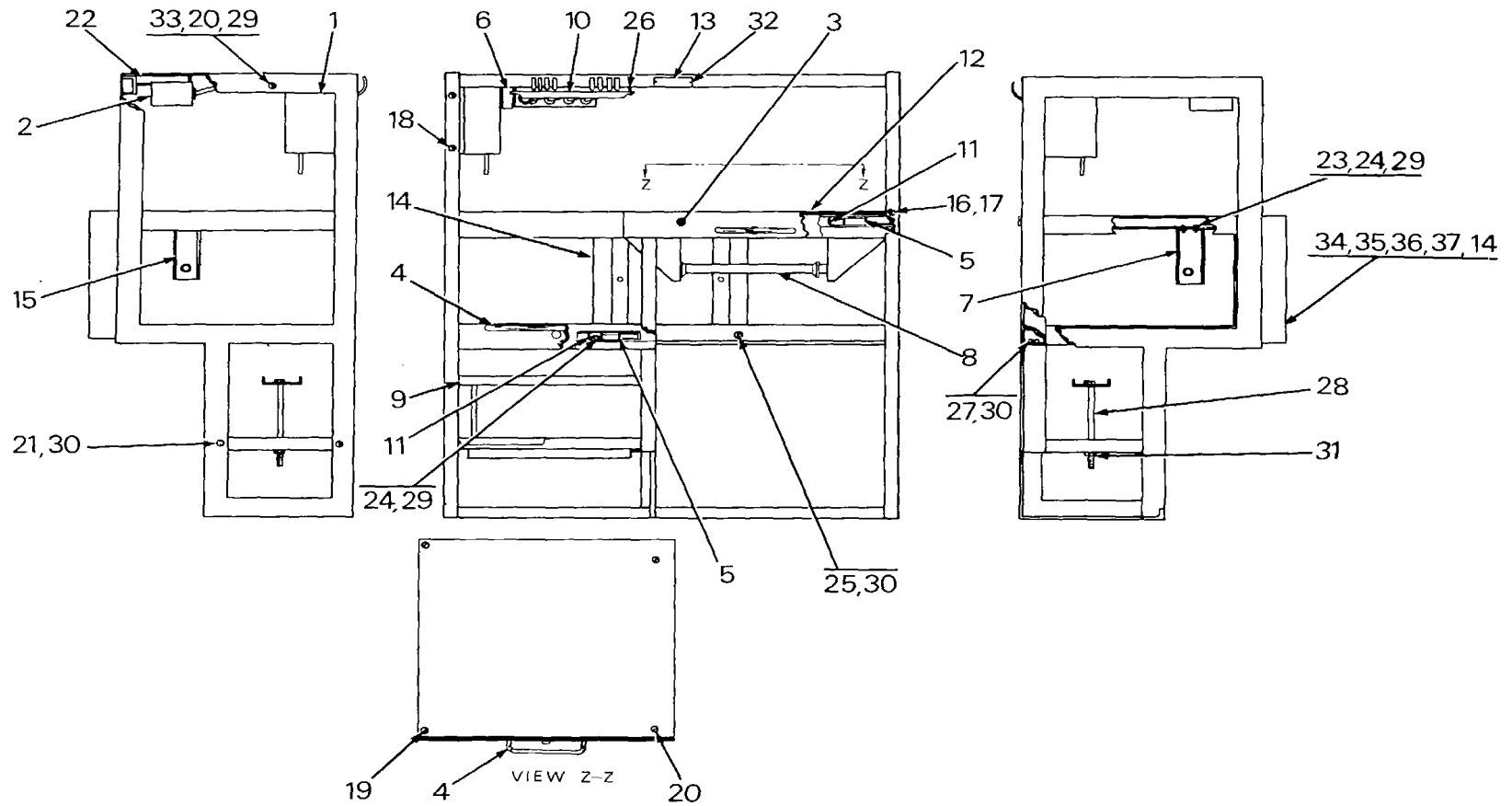


FIGURE 1. Rack, Special Purpose MK-2345/G

REPAIR PARTS LIST

(1) ILLUSTRATION		(2)	(3)	(4)	(5)	(6) DESCRIPTION	(7)	(8) QTY INC IN UNIT
(a) FIG NO.	(b) ITEM NO.	SMR CODE	FEDERAL STOCK NUMBER	PART NUMBER	FSCM	USABLE ON CODE	U/M	
2	01	PAFZZ	5305-00-984-6193	MS35206-245	96906	SCREW	EA	0020
2	02	PAFZZ	5938-00-519-6766	SW1008-2	01255	SWITCH, LEVER	EA	0005
2	03	PAFZZ	5935-00-813-4364	MS3182R18-ISC	96906	CONNECTOR, RECEPTACLE	EA	0001
2	04	PAFZZ	5935-00-729-8937	XL3-14	71468	RECEPTACLE	EA	0001
2	05	PAFZZ		NO PART NUMBER	15942	WIRE, SHIELDED	FT	
2	06	PAFZZ	6145-00-669-6705	822-RED	81349	WIRE, HOOK-UP	FT	
2	07	PAFZZ	6145-00-652-1784	B22-WHITE	81349	WIRE, HOOK-UP	FT	
2	08	PAFZZ	5305-00-984-6193	MS35206-245	96906	SCREW, MACHINE	EA	0004
2	09	PAFZZ	5305-00-889-2999	N80P9008C17	03538	SCREW, MACHINE	EA	0004
2	10	PAFZZ	5315-00-934-9739	MS35649-242	96906	NUT, PLAIN, HEXAGON	EA	0004
2	11	PAFZZ	5315-00-819-4595	MS35333-36	96906	LOCKWASHER	EA	0004
2	12	PAFZZ	5315-00-088-6630	13552-003	81413	SCREW	EA	0003
2	13	PAFZZ	5310-00-949-8014	28914-2	11599	NUT, HEX	EA	0003
2	14	PAFZZ	5310-00-837-6559	95244-2	03848	WASHER, LOCK	EA	0003
2	15	PAFZZ	5325-00-262-7823	1783	70485	GROMMET, RUBBER	EA	0001
2	16	PAFZZ	6145-00-959-4973	2C20-19-32STJK	13842	CABLE, SPECIAL PURPO	FT	
2	17	PAFZZ		2619-1-220	15942	CIRCUIT DIAGRAM	EA	0001
2	18	PAFZZ	5935-00-896-3639	XL-3-11	71468	PLUG	EA	0001
2	19	PAFZZ	6145-00-943-5462	8422	78983	CABLE, AUDIO	FT	

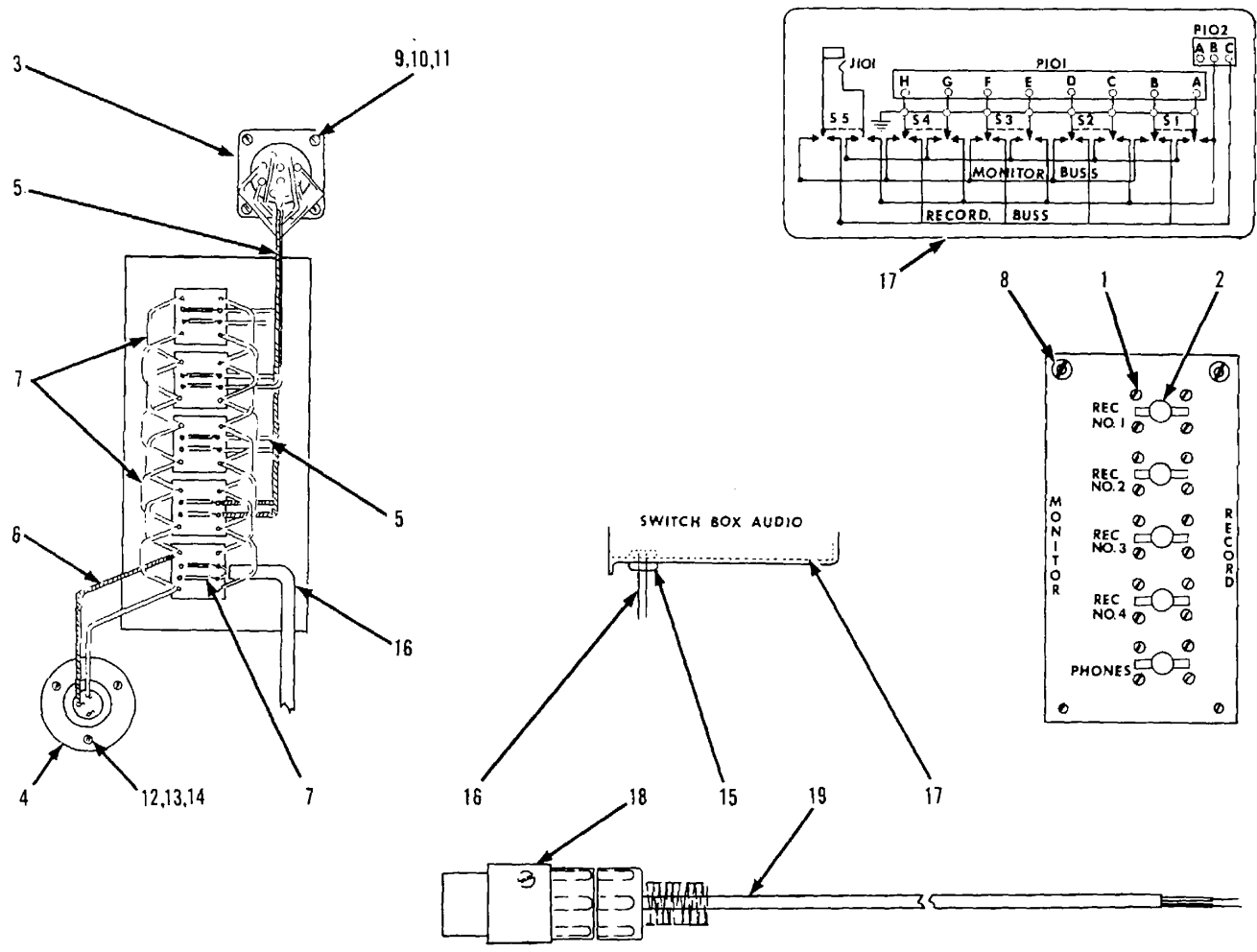


FIGURE 2. Audio Switch Box Assembly

REPAIR PARTS LIST

(1) ILLUSTRATION		(2) SMR CODE	(3) NATIONAL STOCK NUMBER	(4) PART NUMBER	(5) FSCM	(6) DESCRIPTION	USABLE ON CODE	(7) U/M	(8) QTY INC IN UNIT
(a) FIG NO.	(b) ITEM NO.								
2.1	28	PAFZZ	5935-00-834-4984	MS3106RLB-IP	96986	CONNECTOR, PLUG, ELEC		EA	0001
2.1	21	PAFZZ	5935-00-889-8786	MS3857-10	96906	CLAMP, CABLE		EA	0001
2.1	22	PAFZZ	6145-00-943-5462	8422	78983	CABLE, AUDIO		FT	
2.1	23	PAFZZ	5935-00-283-2958	U77/U	80858	CONNECTOR, AUDIO		EA	0004
2.1	24	PAFZZ		2619-1-216	15942	CONDUCTOR ASSY		EA	0001
2.1	25	PAFZZ		2619-1-217	15942	DRAWING		EA	0002
2.1	26	PAFZZ	5305-00-988-1727	N8BP21016C11	03538	SCREW, MACHINE		EA	0002
2.1	27	PAFZZ	5310-00-997-1888	15-5-5	96046	NUT, PLAIN, HEXAGON		EA	0004
2.1	28	PAFZZ	5318-00-913-9495	MS27183-9	96986	W4ASHER, PLAIN		EA	0004
2.1	29	PAFZZ	5385-00-984-6195	MS35286-247	96986	SCREW, MACHINE		EA	0006
2.1	30	PAFZZ	5310-00-934-9757	1036	92878	NUT, PLAIN, HEXAGON		EA	0012
2.1	31	PAFZZ	5310-00-809-8544	MS27183-7	96986	WASHER, FLAT		EA	0012
2.1	32	PAFZZ	5305-00-984-6194	MS24584-53	84939	SCREW, MACHINE		EA	0004
2.1	33	PAFZZ	5948-80-143-4777	C530-14	98410	TERMINAL, LUG		EA	0008
2.1	34	PAFZZ	6145-00-682-9938	CO02MGF2-14-0420	81349	CABLE, POWER		FT	
2.1	35	PAFZZ	5935-00-931-4207	164-281-iPI7	82668	PLUG, POWER CABLE		EA	0004
2.1	36	PAFZZ	5975-00-518-1988	NCO21	78229	BOX CONNECTOR, ELECT		EA	0005
2.1	37	PAFZZ	5940-88-143-4774	88537-88	98418	TERMINAL, LUG		EA	0002
2.1	38	PAFZZ	6145-00-889-1453	C882MGF2-12-58800	81349	CABLE, POWER, ELECTRI		FT	
2.1	39	PAFZZ	5935-00-243-5563	160-9N	82668	PLUG, ELECTRICAL		EA	0001
2.1	48	PAFZZ	5975-00-296-6886	1019	93791	BOX CONNECTOR, ELECT		EA	0001
2.1	41	PAFZZ	5385-00-984-6193	MS35206-245	96906	SCREW, MACHINE		EA	0003

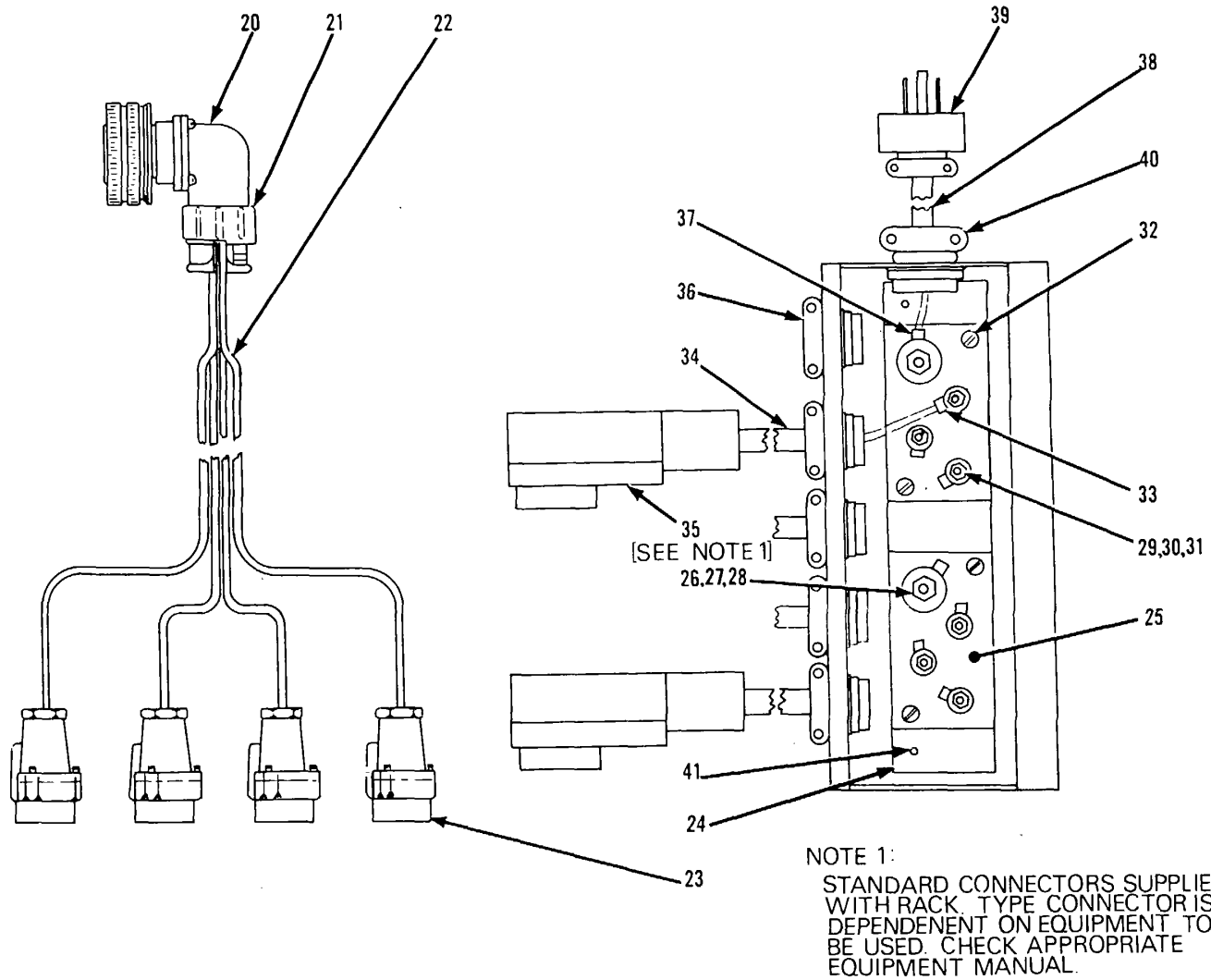


FIGURE 2.1 Power Distribution Box and Audio Cable Assembly

REPAIR PARTS LIST

(1) ILLUSTRATION		(2)	(3)	(4)	(5)	(6) DESCRIPTION	(7)	(8) QTY INC IN UNIT
(a) FIG NO.	(b) ITEM NO.	SMR CODE	NATIONAL STOCK NUMBER	PART NUMBER	FSCM	USABLE ON CODE	U/M	
3	01	XBFZZ		2619-1-137	15942	HANDLE, DRAWER	EA	0001
3	02	XBFZZ		2619-1-138	15942	, CLAMP, SCREW BLOCK	EA	0002
3	03	XBFZZ		2619-1-139	15942	CLAMP, SCREW BLOCK	EA	0002
3	04	XBFZZ		2619-1-140	15942	PAD, CLAMP SCREW	EA	0002
3	05	XBFZZ		2619-1-134	15942	THUMBREST	EA	0001
3	06	XBFZZ		2619-1-211	15942	PUSHROD	EA	0001
3	07	XBFZZ		2619-1-132	15942	SPRING, LOCK	EA	0001
3	08	XBFZZ		2619-1-133	15942	LEVER, LOCKING DEVICE	EA	0001
3	09	XBFZZ		2619-1-135-1	15942	LOCKBAR, DRAWER	EA	0001
3	10	PAFZZ	5310-00-722-5943	AN960-10	88044	WASHER	EA	0001
3	11	PAFZZ	5310-00-791-8499	AN960-416	88044	WASHER	EA	0001
3	12	PAFZZ		C572-017-222	78553	FASTENER	EA	0001
3	13	PAFZZ	5315-00-812-3737	MS20392-1C9	96906	PIN, STRAIGHT, HEADED	EA	0002
3	14	PAFZZ	5315-00-815-1405	MS24665-151	96906	PIN, COTTER	EA	0003
3	15	PAFZZ	5310-00-167-0816	11382363P6	89954	WASHER, FLAT	EA	0002
3	16	PAFZZ	5305-00-958-5451	N84P1301OC6	24446	SCREW, MACHINE	EA	0002
3	17	PAFZZ	5305-00-984-6194	MS24584-53	04939	SCREW, MACHINE	EA	0002
3	18	PAFZZ	5310-00-811-3494	22M82	72962	NUT, STOP	EA	0002
3	19	PAFZZ	5340-00-688-2845	1343	70485	BUMPER, RUBBER	EA	0002
3	20	X8FZZ		2619-1-136	15942	HANDLE, TYPEWRITER	EA	0001
3	21	XBFZZ		2619-1-135-2	15942	LOCKBAR, DRAWER	EA	0001
3	22	PAFZZ	5305-00-984-7341	214	77445	SCREW, MACHINE	EA	0002
3	23	PAFZZ	5310-00-827-7881	22NC3-02	72962	NUT	EA	0004

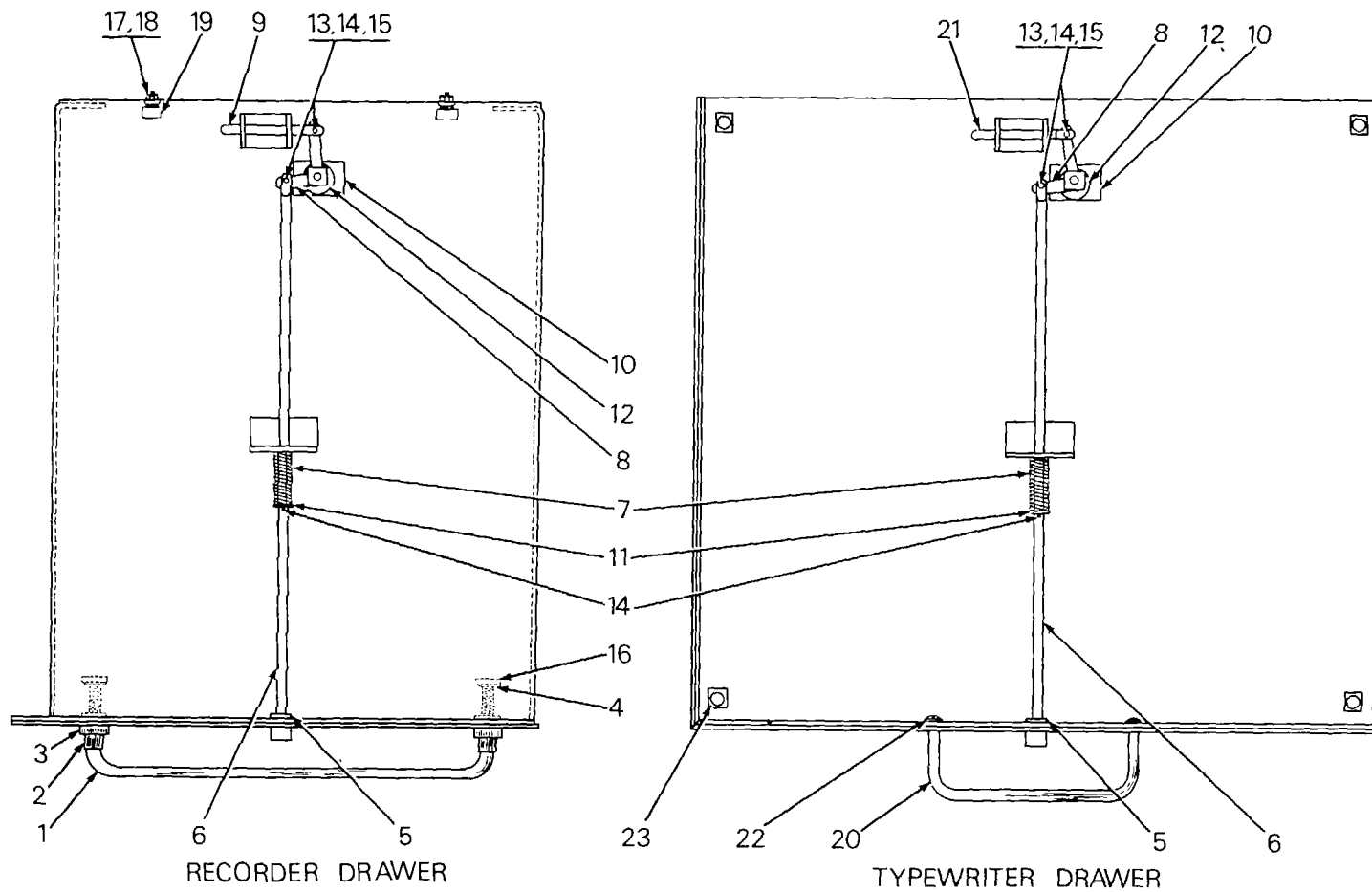


FIGURE 3. Rack Drawer Assembly

Section VI. NATIONAL STOCK NUMBER AND PART NUMBER INDEX

NAT. STOCK NUMBER	FIG NO.	ITEM NO.
5305-00-059-4568	1	18
5305-00-068-0501	1	27
5305-00-088-6630	2	12
5305-00-088-8332	1	20
5305-00-253-5609	1	32
5305-00-889-2999	2	09
5305-00-957-6273	1	19
5305-00-958-0662	1	25
5305-00-958-5245	1	21
5305-00-958-5451	3	16
5305-00-984-4988	1	22
5305-00-984-6193	2	01
5305-00-984-6193	2	08
5305-00-984-6193	2.1	41
5305-00-984-6194	2.1	32
5305-00-984-6194	3	17
5305-00-984-6195	2.1	29
5305-00-984-7341	3	22
5305-00-988-1725	1	26
5305-00-988-1727	2.1	26
5305-00-989-7435	1	23
5305-00-993-1848	1	24
5310-00-167-0816	3	15
5310-00-319-2614	1	17
5310-00-436-7218	1	35
5310-00-582-5965	1	37
5310-00-607-3691	1	31
5310-00-722-5943	3	10
5310-00-761-6882	1	30
5310-00-791-8499	3	11
5310-00-809-4058	1	36
5310-00-809-8544	2.1	31
5310-00-811-3494	3	18
5310-00-819-4595	2	11
5310-00-827-7881	3	23
5310-00-837-6559	2	14
5310-00-877-5797	1	29
5310-00-913-9495	2.1	28
5310-00-934-9739	2	10
5310-00-934-9757	2.1	30
5310-00-949-8014	2	13
5310-00-997-1888	2.1	27
5315-00-812-3737	3	13
5315-00-815-1405	3	14
5325-00-262-7823	2	15
5340-00-060-4824	1	33
5340-00-680-2845	3	19
5815-00-892-9088	1	
5895-00-482-6499	1	01
5930-00-519-6766	2	82

Section VI. NATIONAL STOCK NUMBER AND PART NUMBER INDEX

NAT. STOCK NUMBER	FIG NO.	ITEM NO.
5935-00-243-5563	2.1	39
5935-00-283-2950	2.1	23
5935-00-729-8937	2	04
5935-00-809-0786	2.1	21
5935-00-813-4364	2	03
5935-00-834-4904	2.1	20
5935-00-868-0467	1	16
5935-00-896-3639	2	18
5935-00-931-4207	2.1	35
5940-00-143-4774	2.1	37
5940-00-143-4777	2.1	33
5975-00-296-6086	2.1	40
5975-00-518-1908	2.1	36
6145-00-652-1784	2	07
6145-00-669-6705	2	06
6145-00-682-9936	2.1	34
6145-00-889-1453	2.1	38
6145-00-943-5462	2	19
6145-00-943-5462	2.1	22
6145-00-959-4973	2	16

Section VI. NATIONAL STOCK NUMBER AND PART NUMBER INDEX

MANUF. PART NO.	FSCM	FIG NO.	ITEM NO.
AN935-416	88044	1	37
AN960-10	88044	3	10
AN960-416	88044	3	11
A22506-4	89326	1	36
BB37-08	98410	2.1	37
B22-RED	81349	2	06
B22-WHITE	81349	2	07
B3 6-1445REVAPC4	23168	1	31
C302MGF2-12-0500	81349	2.1	38
C002MGF2-14-0420	81349	2.1	34
C530-14	98410	2.1	33
C572-017-222	78553	3	12
MS2039, -1C9	96906	3	13
MS24584-53	04939	2.1	32
MS24584-53	04939	3	17
MS24665-151	96906	3	14
MS27183-7	96906	2.1	31
MS27183-9	96906	2.1	28
MS3057-10	96906	2.1	21
MS3102R18-ISC	96906	2	03
MS3106R18-IP	96906	2.1	20
MS35190-253	96906	1	18
MS35190-270	96906	1	19
MS35190-272	96906	1	20
MS35206-245	96906	2	01
MS35206-245	96906	2	08
MS35206-245	96906	2.1	41
MS35206-247	96906	2.1	29
MS35206-25	96906	1	22
MS35207-231	96906	1	25
MS35207-265	96906	1	24
MS35333-36	96906	2	11
MS35649-242	96906	2	10
MS51967-2	96906	1	30
MS51969-11	96906	1	35
MS 9725	81348	1	34
MT-2345G	80058	1	
NC 021	78229	2.1	36
NO PART NUMBER	15942	2	05
NO 203	90201	1	17
NO 32B	82389	1	16
N80P16010C17	24446	1	23
N80P2101Q90	09817	1	26
N80P21016C11	03538	2.1	26
N80P9008C17	03538	2	09
N84P1311BCb	24446	3	16
PA1784	79805	1	21
SW1008-2	01255	2	02
U77/U	80058	2.1	23
XL-3-11	71468	2	18

Section VI. NATIONAL STOCK NUMBER AND PART NUMBER INDEX

MANUF. PART NO.	FSCM	FIG NO.	ITEM NO.
XL3-14	71468	2	04
1019	93791	2.1	40
1036	92878	2.1	30
113B2363P6	89954	3	15
1343	70485	3	19
13552-003	81413	2	12
15-5-5	96046	2.1	27
160-9N	02660	2.1	39
164-201-1P17	02660	2.1	35
17-675-00-002	78022	1	32
1783	70485	2	15
2C20-19-32STJK	13042	2	16
214	77445	3	22
22M02	72962	1	29
22M82	72962	3	18
22NC3-02	72962	3	23
2619-1-132	15942	3	07
2619-1-133	15942	3	08
2619-1-134	15942	3	05
2619-1-135-1	15942	3	09
2619-1-135-2	15942	3	21
2619-1-136	15942	3	20
2619-1-137	15942	3	01
2619-1-138	15942	3	02
2619-1-139	15942	3	03
2619-1-140	15942	3	04
2619-1-149	15942	1	14
2619-1-211	15942	3	06
2619-1-212	15942	1	11
2619-1-213	15942	1	12
2619-1-214	15942	1	13
2619-1-216	15942	2.1	24
2619-1-217	15942	2.1	25
2619-1-220	15942	2	17
2619-1-221	15942	1	10
2619-1-222	15942	1	09
2619-1-223	15942	1	08
2619-1-226	15942	1	15
2619-1-226-1	15942	1	07
2619-1-306	15942	1	05
2619-1-311	15942	1	04
2619-1-314	15942	1	03
2619-1-315	15942	1	02
2619-1-317	15942	1	01
2619-1-320	15942	1	06
2619-1-401	15942	1	28
28914-2	11599	2	13
725	71002	1	33
8422	70903	2	19
8422	70903	2.1	22

Section VI. NATIONAL STOCK NUMBER AND PART NUMBER INDEX

MANUF. PART NO.	FSCM	FIG NO.	ITEM NO.
9415796	24617	1	27
95244-2	03848	2	14

By Order of the Secretary of the Army:


FRED C. WEYAND
General, United States Army
Chief of Staff

Official:

VERNE L. BOWERS
Major General, United States Army
The Adjutant General

U.S. GOVERNMENT PRINTING OFFICE: 1975--580-855/7085A

RECOMMENDED CHANGES TO EQUIPMENT TECHNICAL PUBLICATIONS

 <div style="border: 1px solid black; border-radius: 15px; padding: 5px; display: inline-block; margin-left: 20px;"> <p style="font-size: small; margin: 0;">THEN...JOT DOWN THE DOPE ABOUT IT ON THIS FORM. CAREFULLY TEAR IT OUT, FOLD IT AND DROP IT IN THE MAIL.</p> </div>		SOMETHING WRONG WITH PUBLICATION	
		FROM: (PRINT YOUR UNIT'S COMPLETE ADDRESS)	
PUBLICATION NUMBER		DATE SENT	
PUBLICATION DATE		PUBLICATION TITLE	
IN THIS SPACE, TELL WHAT IS WRONG AND WHAT SHOULD BE DONE ABOUT IT.			
BE EXACT PIN-POINT WHERE IT IS			
PAGE NO.	PARA-GRAPH	FIGURE NO.	TABLE NO.
PRINTED NAME, GRADE OR TITLE AND TELEPHONE NUMBER		SIGN HERE	

PIN: 013705-000